

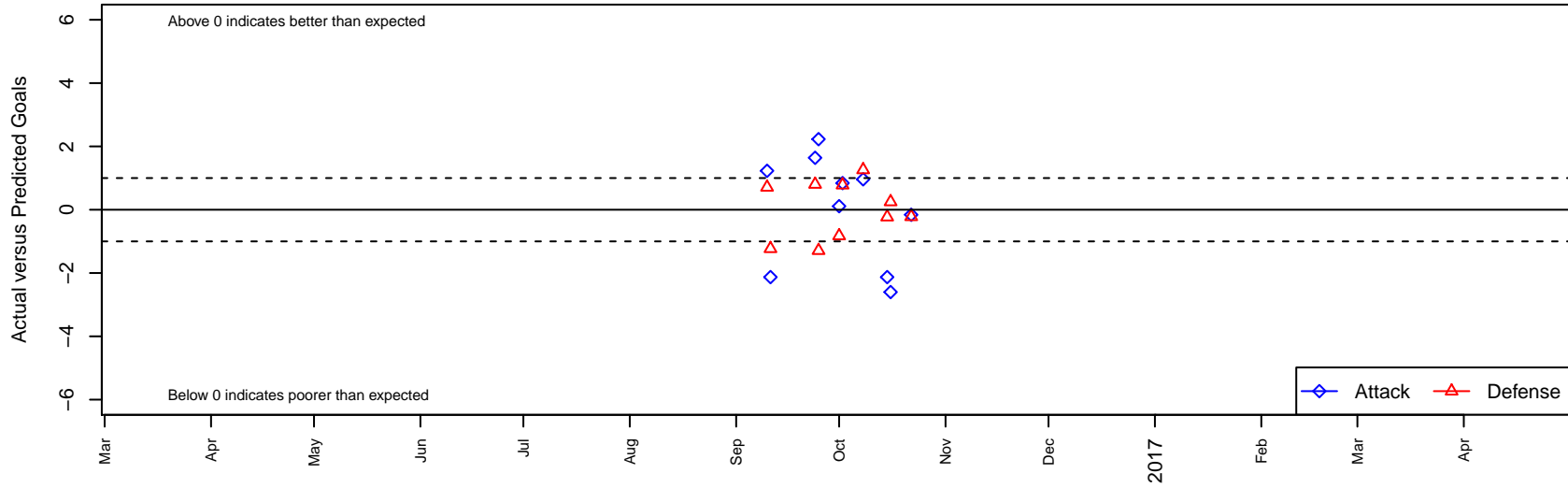
Basin Utd Rage G03

Basin United SC (BUSC)
Klamath Falls, OR
G03 total strength=981
attack=2.98 defense=1.18
fall league = SOCL Cascade U15

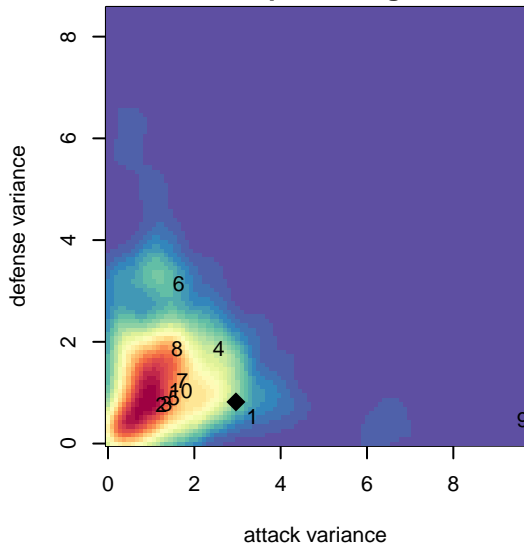
alt names used:

Venues played:
2016 SOCL Cascade U15

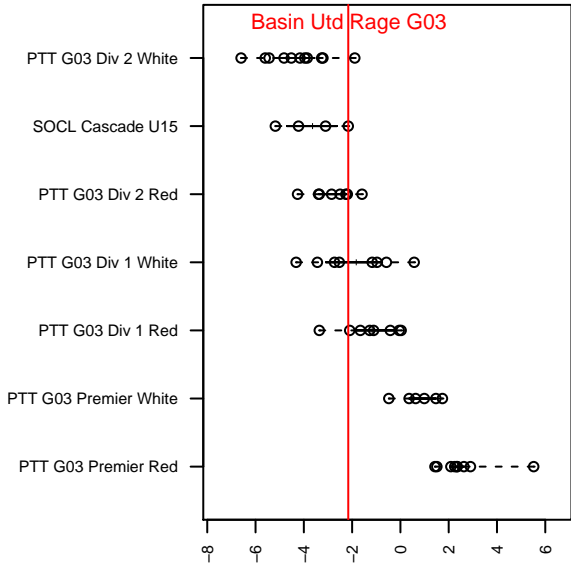
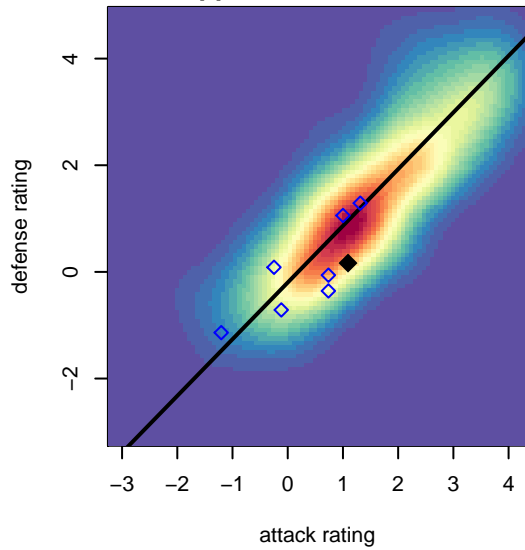
Basin Utd Rage G03
Dots are actual minus expected GF (blue circles) and GA (red triangles).
Blue line is smoothed change in attack strength. Red is smoothed change in defense strength.



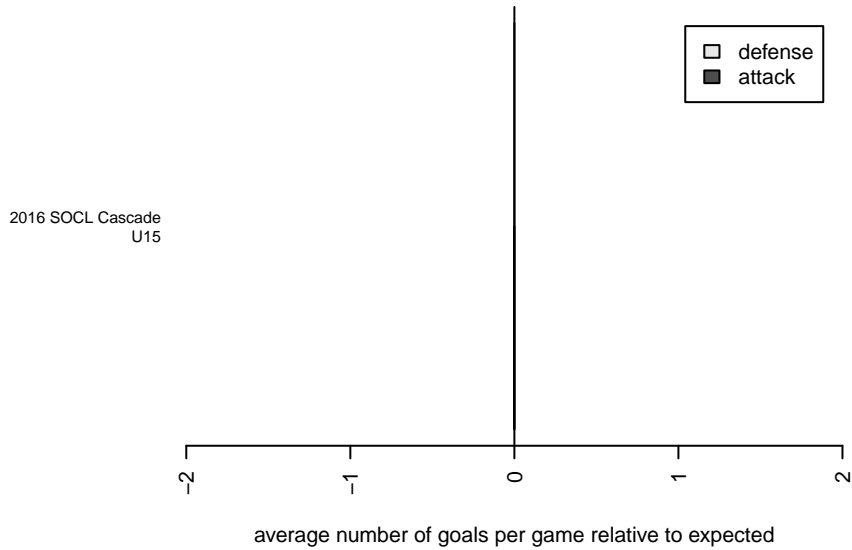
**attack and defense variance (black dot)
relative to other teams
and top 10 in region**



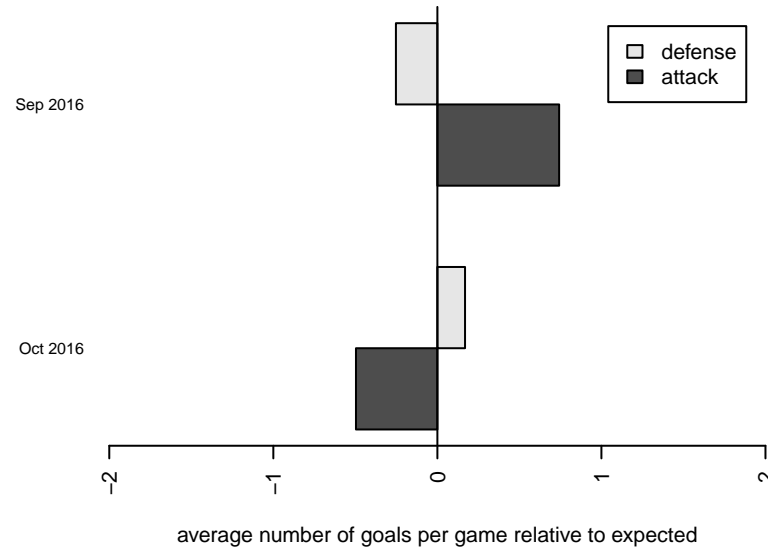
**attack and defense rating
relative to others at age
and all opponents in last 13 months**



Performance relative to 13 month average



Performance relative to 13 month average



date	home		away		venue	pred.home	pred.away
2016-10-22	Basin Utd Rage G03	3	SOSA Spirit G02	2	2016 SOCL Cascade U15	3.16	1.78
2016-10-16	Basin Utd Rage G03	7	Grants Pass YSC Chaos Blue G04	0	2016 SOCL Cascade U15	9.60	0.25
2016-10-15	Ashland SC Crossfire G03	1	Basin Utd Rage G03	4	2016 SOCL Cascade U15	0.77	6.13
2016-10-08	Rogue Valley Timbers White G02	1	Basin Utd Rage G03	2	2016 SOCL Cascade U15	2.26	1.04
2016-10-02	SOSA Spirit G02	1	Basin Utd Rage G03	4	2016 SOCL Cascade U15	1.78	3.16
2016-10-01	Basin Utd Rage G03	1	Grants Pass YSC Blazers Blue G02	4	2016 SOCL Cascade U15	0.89	3.17
2016-09-25	Basin Utd Rage G03	5	Rogue Valley Timbers White G03	2	2016 SOCL Cascade U15	2.77	0.71
2016-09-24	Grants Pass YSC Chaos White G04	1	Basin Utd Rage G03	6	2016 SOCL Cascade U15	1.80	4.36
2016-09-11	Basin Utd Rage G03	4	Ashland SC Crossfire G03	2	2016 SOCL Cascade U15	6.13	0.77
2016-09-10	Rogue Valley Timbers White G03	0	Basin Utd Rage G03	4	2016 SOCL Cascade U15	0.71	2.77